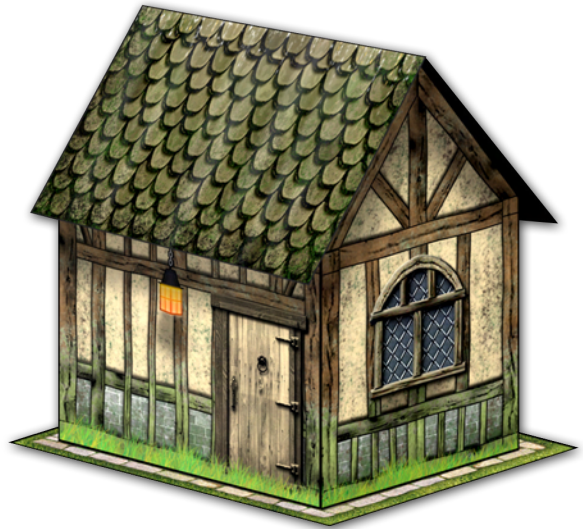


THE HOVEL

30MM SCALE CARDSTOCK TERRAIN FILES
BY DAVE GRAFFAM
www.davesgames.net

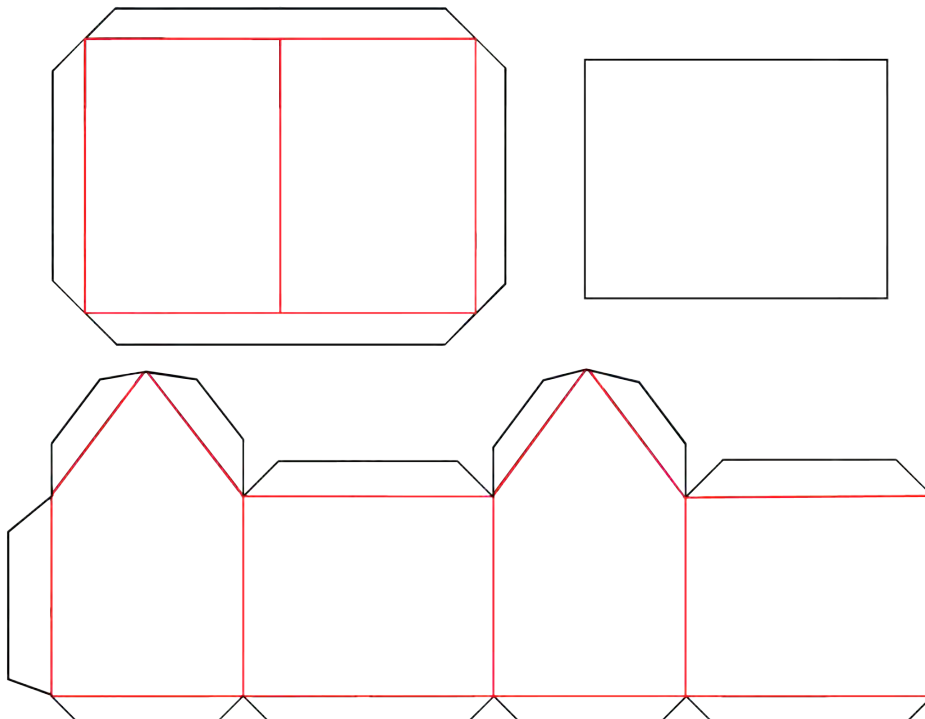


ASSEMBLY INSTRUCTIONS: To create this model, you will need 1 sheet of cardstock, scissors, a hobby knife and glue. Follow the trimming guides on this page. **Cut along the black lines with scissors or a hobby knife.** *Score with a hobby knife and fold back along the red lines.* Starting with the largest sections, glue along the tabs and fit the pieces together using the images as your guide. For the roof, fold the tabs all the way under and glue flat, then glue the roof to the tabs at the tops of the wall sections. Optionally, you can finish this model by using a fine-line black marker to fill in the white edges.

PRINTING TIPS

This file is set up for the standard 28mm-30mm tabletop wargaming scale, and for US letter-sized (8.5" x 11") sheets. Turn off any 'fit to page' options in your printer driver. If you are printing on A4-sized sheets, you may want to reduce the print size to 95% of the original. Do this consistently when printing these files.

Print on heavy cardstock whenever possible. You can create super-sturdy models by printing on plain paper and then gluing this to a heavy bristol board before cutting.



DIFFERENT SCALES

To print at a smaller scale, use the table below and change your print size percentage.

SCALE	%
25mm	84%
20mm	65%
18mm (HO)	60%
15mm	50%
12mm	40%
10mm (N)	34%
8mm	27%
(Z)	23%
6mm	20%